

CONFIGURING X-LITE

X-Lite is a next-generation softphone client, offering users all the productivity of a traditional telephone with desktop and mobile computer enhancements. From a simple click of a mouse button or tap on the keyboard users can dial, answer, or otherwise manage calls and personal availability. Whether over wired or wireless connections, X-Lite supports a variety of headset devices to augment the modern telephony experience, severing the restrictive tethers of traditional, limited telephone receivers. Designed to work over IP-based systems, X-Lite provides endpoint VoIP solutions that use internet-based telephony servers within an enterprise LAN (Local Area Network) or VoIP service provider network.



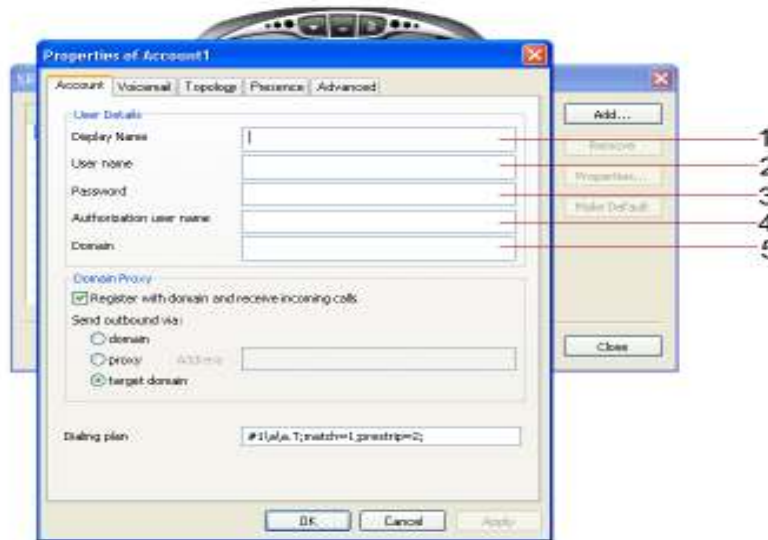
1. Start X-Lite by using the Windows **Start** menu or by double-clicking the desktop icon.
2. The Call display shows *Initializing*, followed by *Discovering network* and *Awaiting proxy login information*. Users must set up at least one account before using X-Lite to place or receive calls



- To use an account for VoIP communication, the account must be enabled within the X-Lite client. To enable an account, click at the **MENU** button of the softphone, choose **SIP Account Settings**.



- Click **Add**. The Properties of Account window appears.



- Under the Account tab, complete the fields within the *User Details* area.

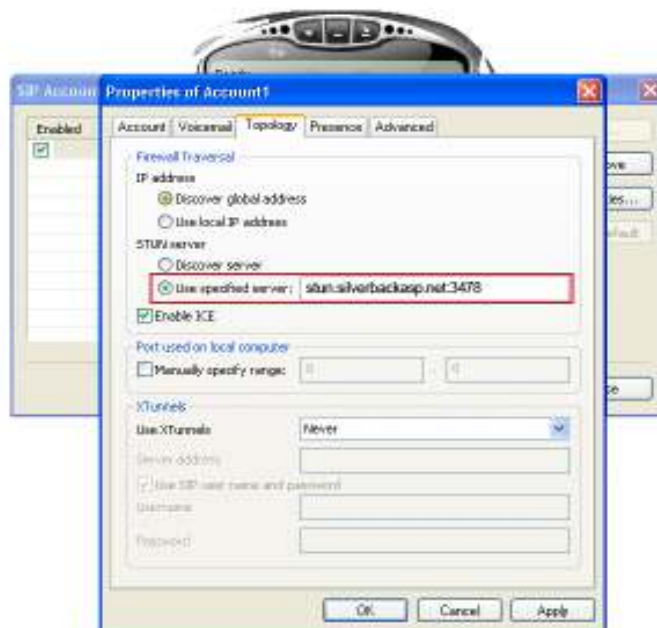
1. Display Name: This name shown in the X-Lite Call display. Remote parties in a call see this name in their phone's display.

2. User Name: Typically, this is the account number for the user's SIP account (e.g. for sip.silverbackasp.com the user name is "2999"). Silverback ASP will configure or disclose this information to their customers.

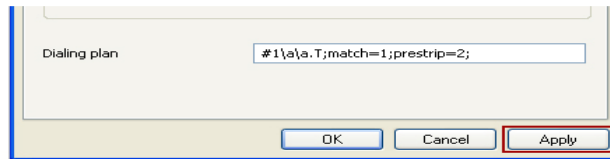
3. Password: Silverback ASP will configure or disclose this information to their customers

4. Authorization User Name: Silverback ASP will configure or disclose this information to their customers.

5. Domain: Typically, this is the account number for the user's SIP account (e.g. for "2999" the domain is "sip.silverbackasp.net"). Silverback ASP will configure or disclose this information to their customers.



6. Then go to **"topology"** tab. Under "STUN Server" select **"Use specified server:"** then key in **stun.silverbackasp.net:3478**



7. Once the fields are completed click "**Apply**" then "**Close**". Wait until it displays "**Ready**" then its ready for use.